

Table of Contents

Introduction.....	2
1. Personal background.....	3
Sex	3
Age	4
Religion.....	4
Socialgroups.....	5
2. Living.....	6
Continent of origin (birth).....	6
Housing conditions.....	7
3. Education	8
4. Economic conditions	12
5. Leisure	15
6. Current issues	18
Political orientation.....	18

Introduction

The social survey 2010-I

The social survey is published twice a year by the student council (politrådet).

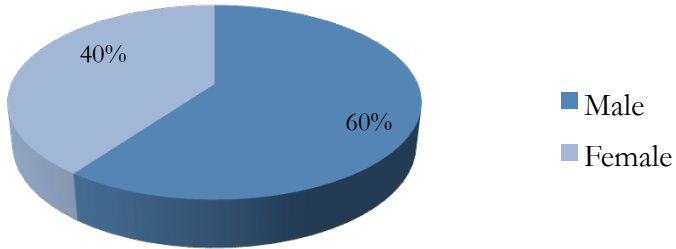
This social survey is based on responses from 25 students starting at polit i February 2010 (winter starters). It is based on a sample of approximately 30 students in total.

This year it was produced by Liv Nyholm Vaag.

1. Personal background

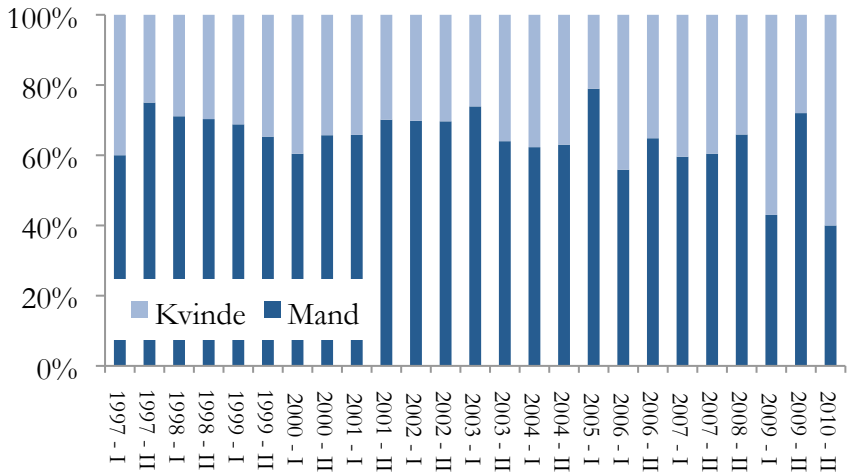
Sex

Figure 1.1 Sex



Timeseries for sex

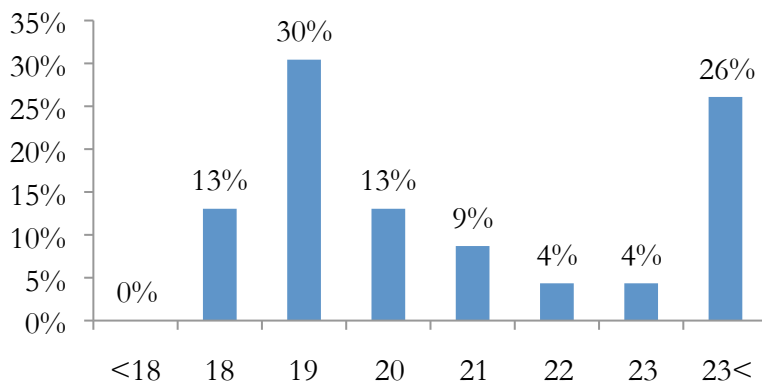
Figure 1.2 The distribution of sexes over the years



Age

The average age of the students is 21,3 years.

Figure 1.3 Distribution of age



Tabel 1.1 Timeseries for average age

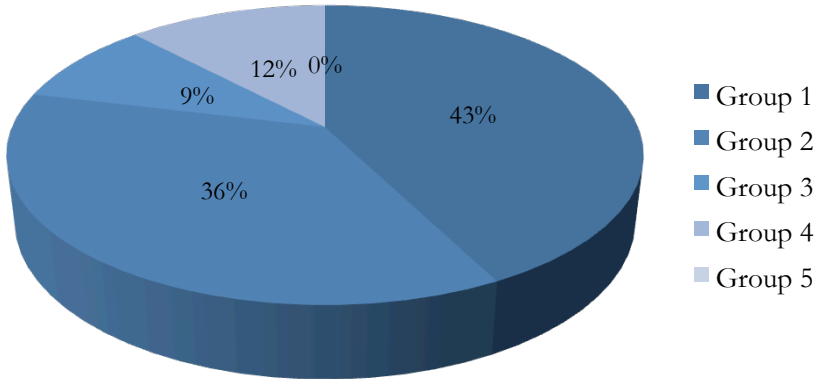
	2006 - II	2007 - I	2007 - II	2008 - I	2008 - II	2009 - I	2009 - II	2010 - I
Age	20,1	22,1	20,1	19,9	19,9	22,0	20,2	21,3

Religion

8 % of the students has specific beliefs, 58 % of the students don't believe in anything, and the last 8 % are not sure.

Socialgroups

Figure 1.4 Which group does your parents belong to?



Social groups

Social group 1

- People with a masters degree
- People who are boss of at least 51 employees
- Self-employed persons with at least 21 employees

Social group 2

- People with a bachelor (or an equivalent) degree
- People who are boss of 11-51 employees
- Self-employed persons with 6-20 employee

Social group 3

- People who are boss of 1-10 employees
- Self-employed persons with 0-5 employee

Social group 4

- Skilled workers

Social group 5

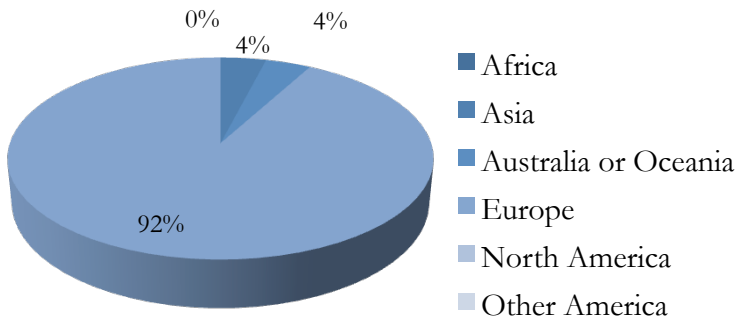
- Unskilled workers

Only 13% of the students have parents that hold a degree in economics.

2. Living

Continent of origin (birth)

Figure 2.1 Where are you from?



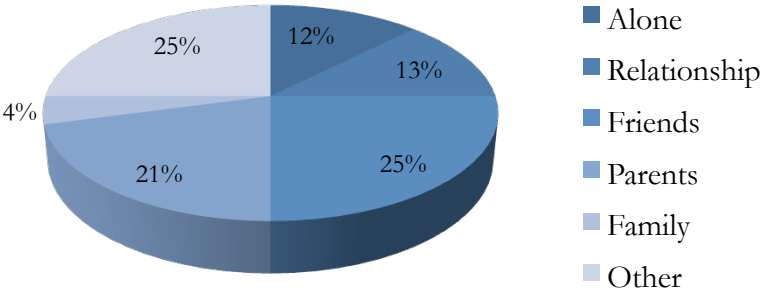
Are you born in Denmark?

54% of the students are born in Denmark, and 46% are born outside Denmark. Most of the students from outside Denmark are from Europe, only two students are from outside Europe, one is from Australia and one is from Asia.

Housing conditions

58 % of the students are actively searching for a dorm room, youth residence or an apartment

Figure 2.2 Housing conditions



3. Education

The students were then asked which year they passed the exam, required to be admitted to the department of economic, and what has taken up most of their time since this exam:

Figure 3.1 Year of graduation

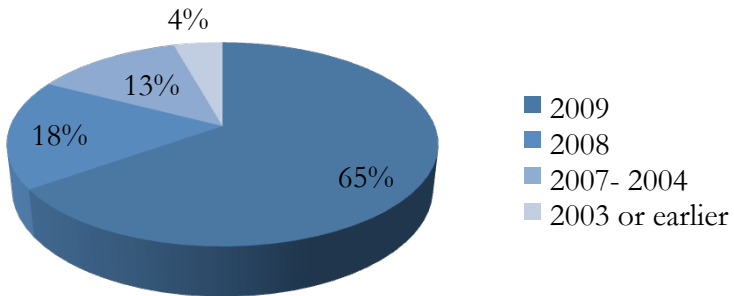
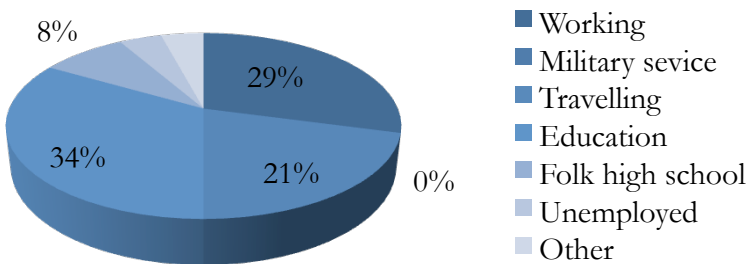


Figure 3.2 Activities before starting at polit



25% of the students of 25 in total have participated in the visiting arrangement at the department of economics.

Figure 3.3 Where did you get Information about polit?

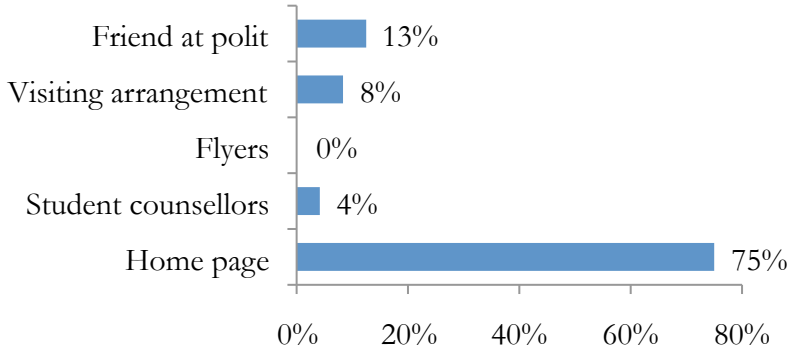


Figure 3.4 Major if free entry for higher education?

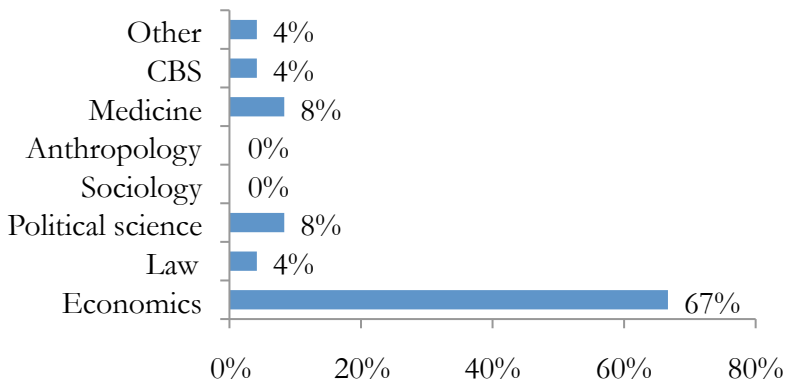
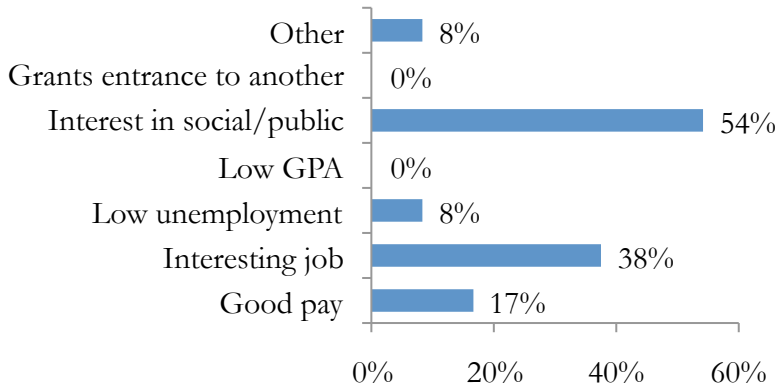
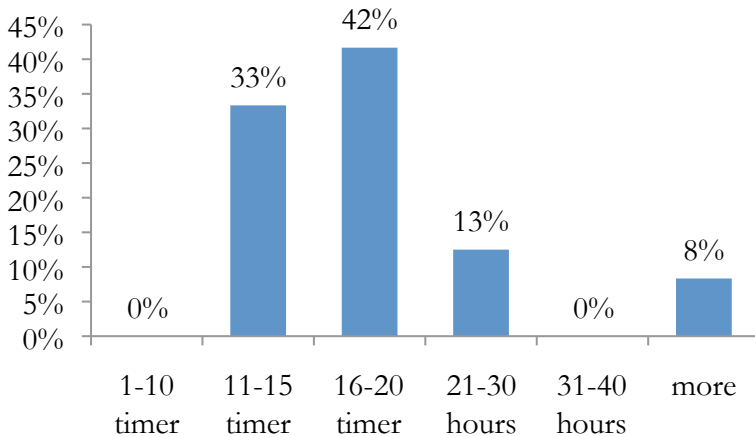


Figure 3.5 Reasons for studying polit?



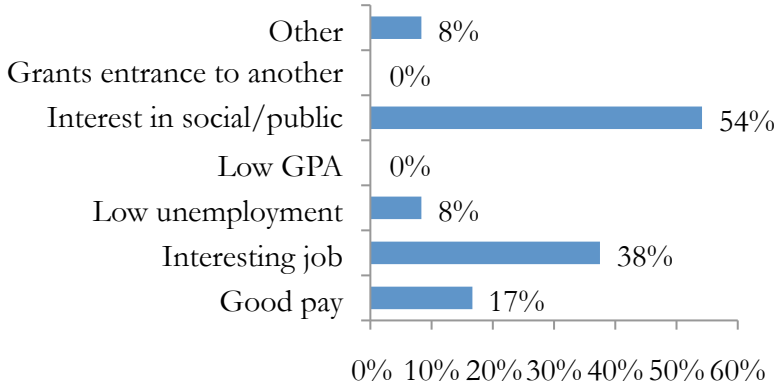
How many hours a week do you expect to spend on preparation and assignments, besides scheduled classes?

Figure 3.6 Akademic work per week



What are your reasons for studying economics?

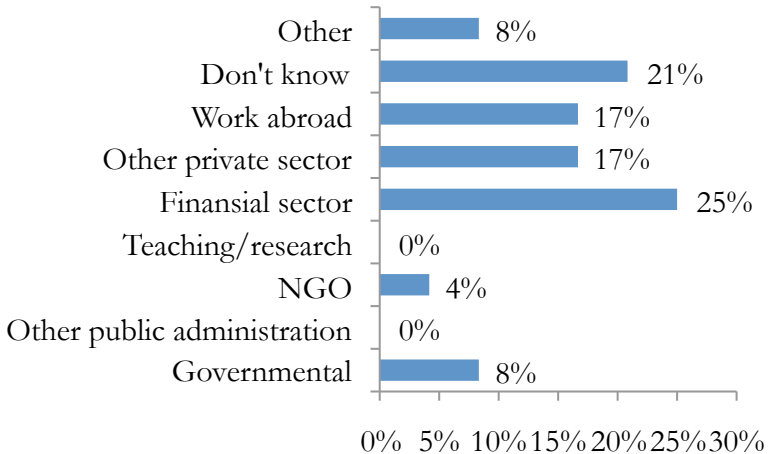
Figure 3.7 Reason for studying polit



38 % of the students are considering a Ph.D. degree and 96 % of the students would like to study abroad.

Where do you expect to work after finishing your degree?

Figure 3.8 Preferred work as cand.polit



4. Economic conditions

The students were asked which situation they prefer out of the following: A: You earn 600 kr. while the rest of your class earns 400 on average. B: You earn 800 kr. while the rest of your class earns 1000 on average.

Figure 4.1 Preferred situation

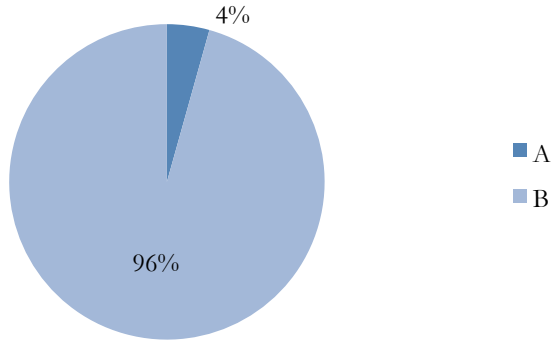
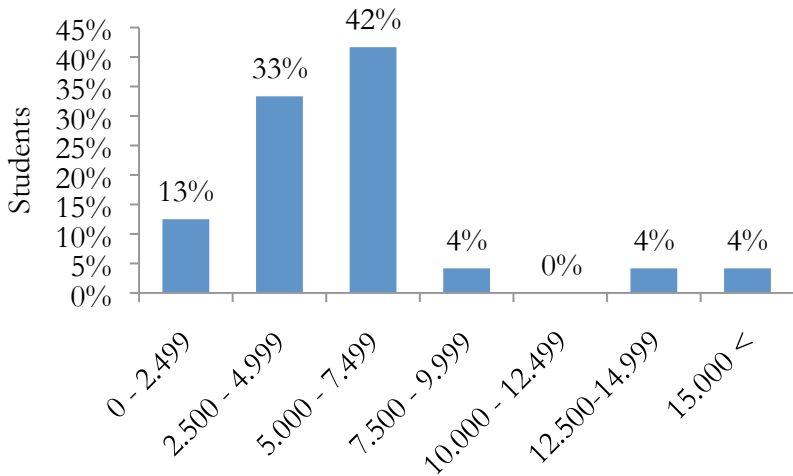
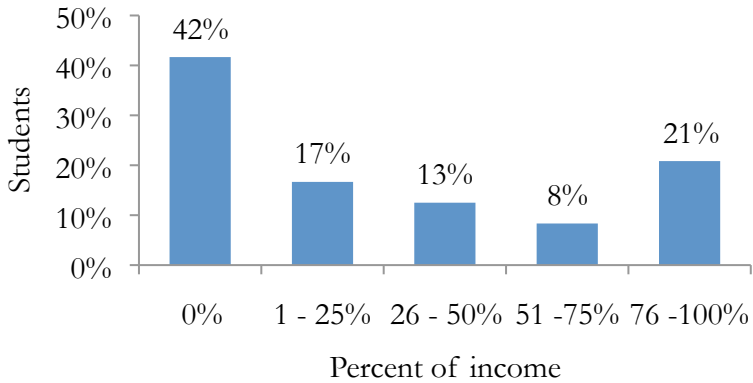


Figure 4.2 Monthly gross income incl. SU



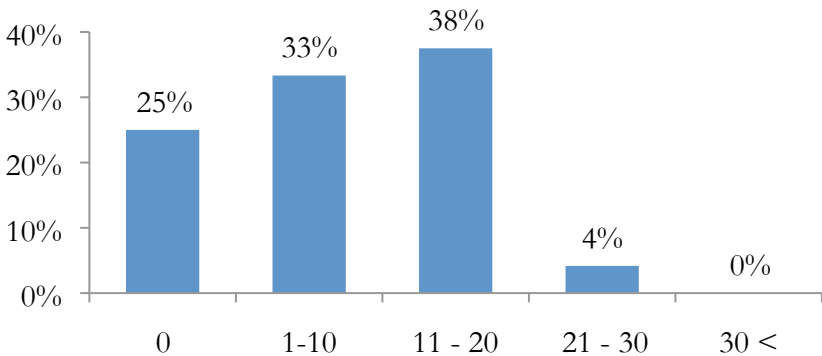
How large a part of your income do you expect to receive from your parents?

Figure 4.3 Part of income from parents



How many hours a week do you expect to work at your job?

Figure 4.4 Hours a week working



38 % of the students are planning to take a student loan.

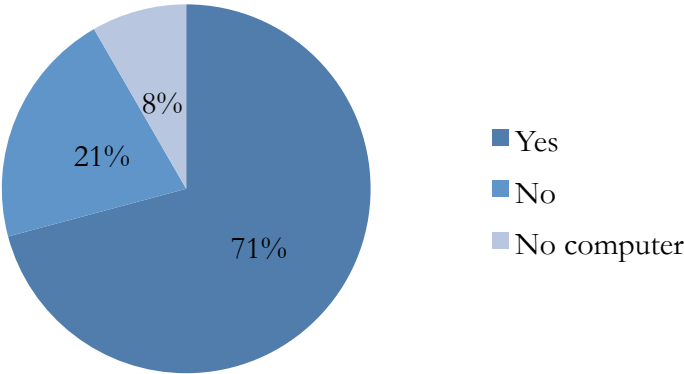
95 % of the students expect to finish their dergree in three years.

5. Leisure

75 % of the students read the newspaper every day.

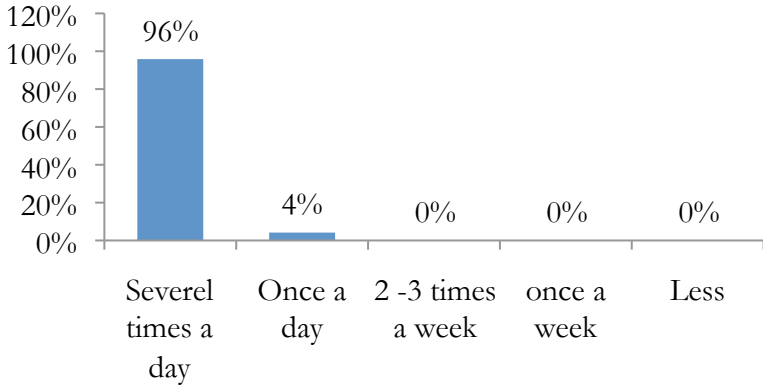
Do you have Windows on your computer?

Figure 5.1 Windows



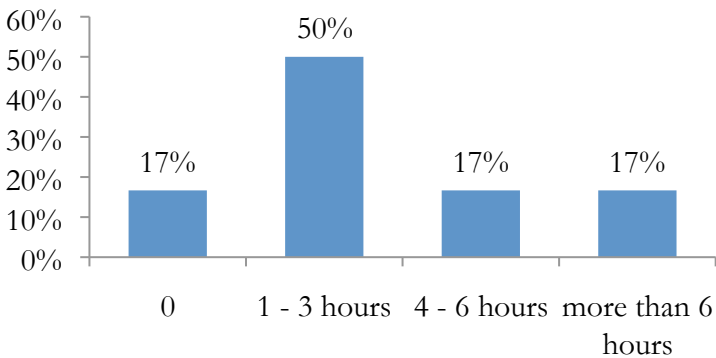
How often are you using the internet?

Figure 5.2 Internet



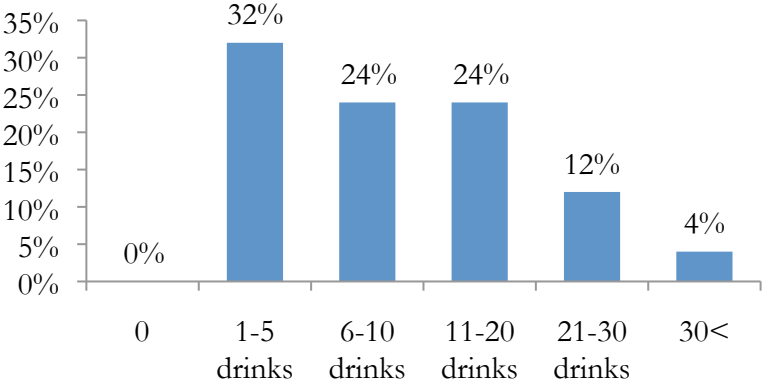
How many hours a week do you do sports?

Figure 5.3 Sport



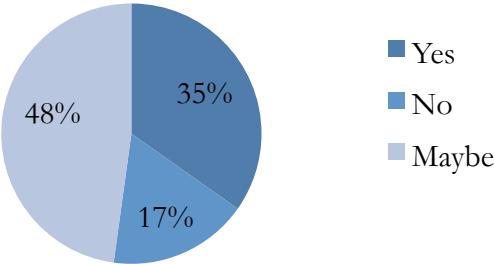
How many drinks of alcohol do you enjoy, during an average week?

Figure 5.4 Alcohol per week



Would you like to be active in student politics?

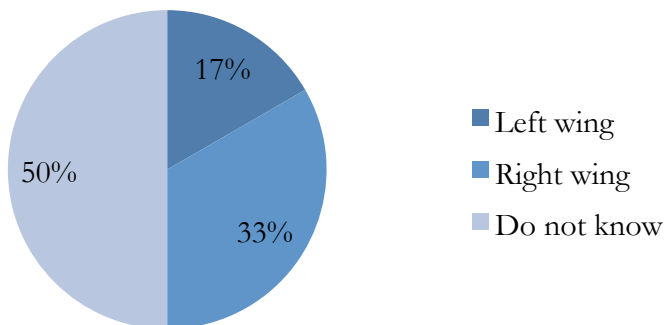
Figure 5.5 Student politics



6. Current issues

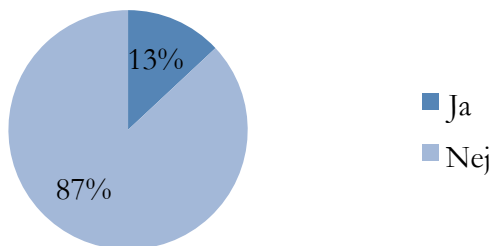
Political orientation

Figure 6.1 Political orientation?



Should Denmark have stayed in Iraq?

Figure 6.2 Iraq



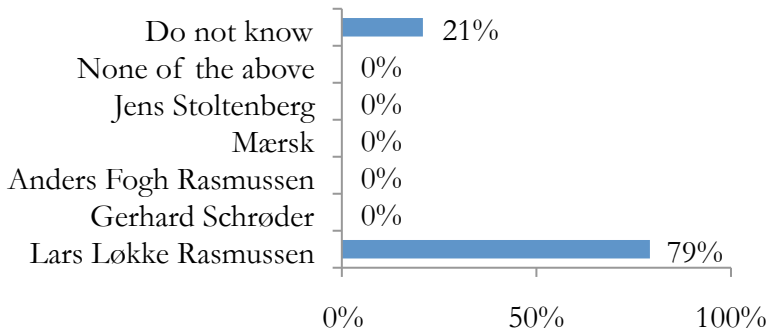
13% of the students are a member of a political party. That is, 3 of the students are a member of a party, one from Konservative Folkeparti, one from Venstres ungdom and one from Socialistisk folkeparti.

What is in your opinion the largest economic problem that Denmark faces?

Figure 6.3 Economic problems in Denmark



Figure 6.4 Who is the danish prime minister?



You are shown 4 cards which all have a letter on the one side and a number on the other. By flipping as few cards as possible you must check the rule "if there is a vocal on the one side, the number on the other side will be an even number". You are presented the cards: E, K, 2, 7. Which would you flip?

Tabel 6.1

E	K	2	7
40%	12%	41%	28%

The right answer is choosing E and 7.

21% of the students chose this combination, that is 4 students of 25 in total.